

MONTHLY MEMBERSHIP PROGRESS REPORT

LOCATION INDIA

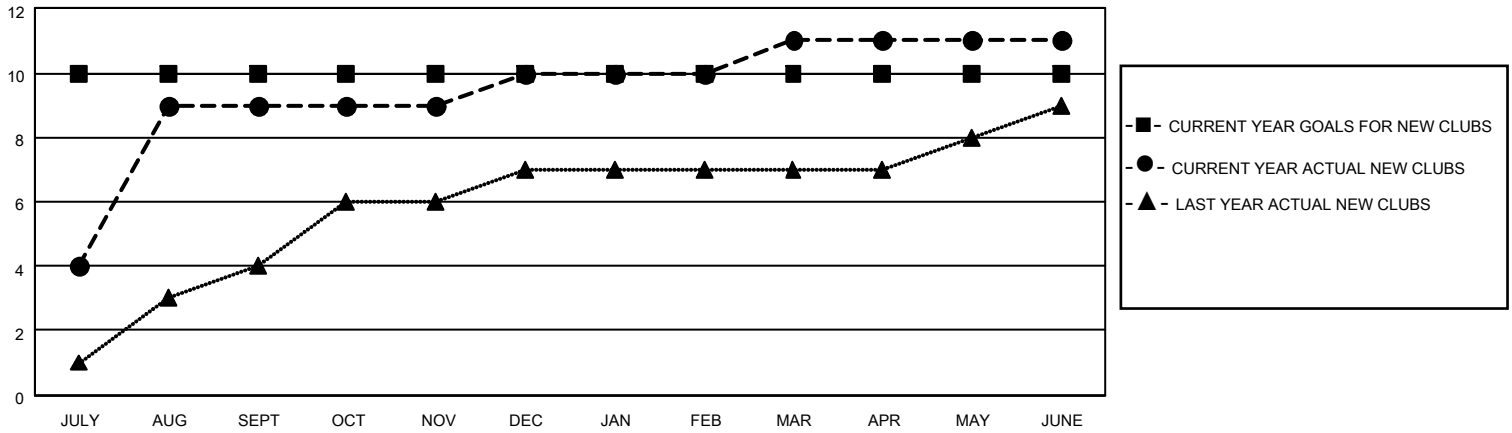
District 322C1

Results as of: 6/30/2023

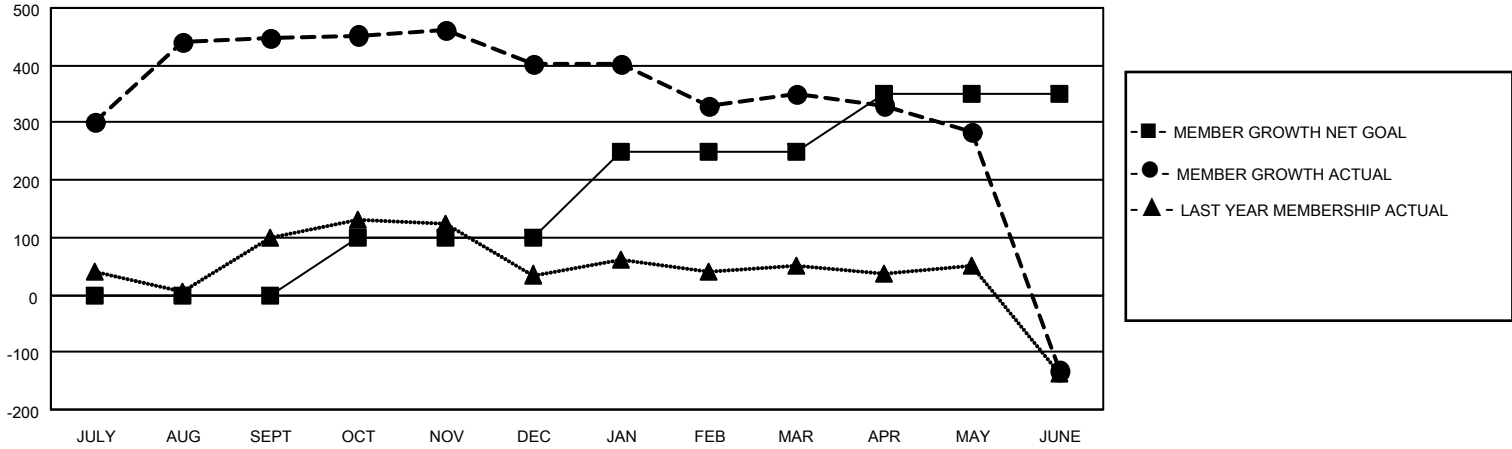
Clubs			
RESULTS FOR 2022-2023			
QUARTER	NEW CLUB GOAL	NEW CLUBS	DROPPED CLUBS
JULY/AUG/SEPT	10	9	1
OCT/NOV/DEC	0	1	6
JAN/FEB/MAR	0	1	3
APR/MAY/JUNE	0	0	8

Members			
RESULTS FOR 2022-2023			
QUARTER	MEMBER GROWTH NET GOAL	MEMBER GROWTH ACTUAL	DROPPED MEMBERS ACTUAL (including transfers)
JULY/AUG/SEPT	0	490	36
OCT/NOV/DEC	100	258	290
JAN/FEB/MAR	150	38	89
APR/MAY/JUNE	100	89	543

GOALS AND ACTUAL NEW CLUBS CUMULATIVE



GOALS AND ACTUAL MEMBERS CUMULATIVE



DROPPED CLUBS: 18

92 CLUBS OF 124 ADDED 1 OR MORE NEW MEMBERS

GENDER DISTRIBUTION

MALE	2,473 (75.19%)
FEMALE	816 (24.81%)
NON BINARY	0 (0.00%)
PREFER NOT TO ANSWER	0 (0.00%)

DROPPED MEMBERS

[CLICK HERE FOR CUMULATIVE MEMBERSHIP DATA](#)

DECEASED	21
CLUB CANCELLED	347
OTHER	590
TOTAL	958

TOTAL FAMILY UNIT MEMBERS 1,704

FAMILY MEMBERS PAYING HALF DUES 997